

Powercrete® R-65/F1 Girth Welds / Rehabilitation

Liquid Epoxy Coating with Quick Application and Long Term Corrosion Protection of Bare Steel

Powercrete R-65/F1 FBE repair cartridge is a 100% solids liquid epoxy coating with quick cure time for efficient, user-friendly application. Product can be applied on bare steel and fusion bond epoxy. This Manual Application guide gives detailed explanation regarding the use of the repair cartridge. The use of the repair cartridge is recommended for small repairs & patching. For large repair areas, please consult a Corrosion Protection Group representative.

1. Cartridge



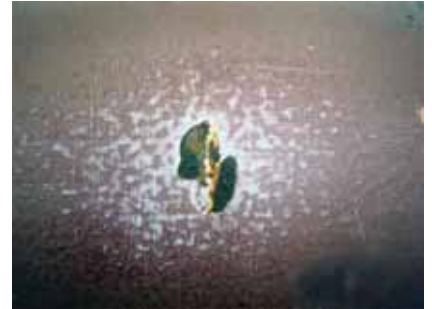
1. The two component Epoxy coating "Powercrete R-65/F-1" is supplied in cartridges. Each cartridge is filled with premeasured Part-A and Part-B in their respective compartments of this dual cartridge. At the time of use, the temperature of cartridge must be above 20°C (68°F). Cartridge is supplied in sealed condition with a seal-cap on the nozzle.

2. Surface Preparation



2. Clean the damaged/patch area by removing loose coating, dust and other contaminants.

3. Surface Preparation



3. Clean & roughen the damaged/patch area surrounding main coating to at least 1 inch (25 mm) from all edges of the damaged portion

4. Surface Preparation



4. Clean the steel surface, so that rust is completely removed. The surface must be clean of grease, oil, salts and other contaminants. If necessary, wipe/clean the area with Acetone, MEK or other suitable solvent which does not leave a residue. Remove all moisture from the repair area.

5. Dual Cartridge Pack



5. Cartridges are supplied with properly proportionate ratio of Part A and Part B and in premeasured condition.

6. Manually operated Plunger Push Dual-Cartridge Gun



6. For the use of cartridge material, an appropriate type and size of cartridge gun is to be used.

7. Application



7. Place the product filled cartridge properly in the cartridge gun, as shown in this picture. The Cartridge must fit properly.

8. Application



8. Remove the seal-cap on the each side of the cartridge and attach static mixer provided along with the cartridge. Each pack of cartridges has two static mixer elements included.

9. Application



9. The cartridge is ready for use. When gun is operated, the plunger will dispense Part-A and Part-B material in proportionate amount. The epoxy is mixed in the static mixer and comes out as mixed materials. If area needs repairing is small, and for multiple use of the same cartridge material, ensure that, static mixer element is changed.

10. Application



10. Dispense the desired amount of mixed material on a clean area. Apply it immediately on the patch/damage area, using a spatula or suitable tool.

11. Application



11. Apply the material to a uniform thickness immediately, when the material is wet.

12. Application



12. Allow the repaired/coated area to cure. Powercrete R-65/F-1 is a fast setting epoxy. Until the applied coating is cured, protect the area against any accidental damage.

Storage

For optimum performance, store Powercrete® Epoxy products in a dry, well-ventilated area. Maintain products in original packaging and sealed until just before use. Avoid exposure to direct sunlight, rain, snow, dust or other adverse environmental conditions or contaminants.

NOTE: Avoid prolonged storage at temperatures above 40°C (104°F) or below 5°C (49°F). Do not use static mixer if it is blocked. Also, do not try to clean mixing element by using solvent. If mixer element is blocked, replace with another static mixer element.

Contact your Berry Plastics representative for additional requirement of cartridge guns.

Safety Guidelines

Important: Read the MSDS prior to using the products. Product installation should be done in well-ventilated area and in accordance with local health and safety regulations. These application guidelines are intended as a guide for standard products. Consult your Berry Plastics representative for specific projects or unique applications.



The leading global partner in protecting the integrity of critical infrastructure.

Berry Plastics warrants that the product(s) represented within conform(s) to its/their chemical and physical description and is appropriate for the use as stated on the respective technical data sheet when used in compliance with Berry Plastics written instructions. Since many installation factors are beyond the control of Berry Plastics, the user is obligated to determine the suitability of the products for the intended use and assume all risks and liabilities in connection herewith. Berry Plastics liability is stated in the standard terms and conditions of sale. Berry Plastics makes no other warranty either expressed or implied. All information contained in the respective technical data sheet(s) should be used as a guide and is subject to change without notice. This document supersedes all previous revisions. Please see revision date on the right.

Local Distributor / Representative:

For contact details of local Distributors / Representatives Please visit www.berrycpg.com.

Headquarters
Franklin, MA, USA
Tel: +1 508 918 1714
US Toll Free: +1 800 248 0149
Fax: +1 508 918 1910
CPG@berryplastics.com

Houston, TX, USA
Tel: +1 713 676 0085
US Toll Free: +1 888 676 7202
Fax: +1 713 676 0086
CPGH@berryplastics.com

Tijuana, Mexico
Tel USA +1 858 633 9797
Fax US: +1 858 633 9740
Tel Mexico: +52 664 647 4397
Fax Mexico: +52 664 607 9105
CPGTJ@berryplastics.com

Westerlo, Belgium
Tel. +32 14 722500
Fax +32 14 722570
CPGE@berryplastics.com

Baroda, India
Tel: +91 2667 264721
Fax: +91 2667 264724
CPGIN@berryplastics.com